

EasyPrint MLP Apex

Multi-Lane • Traversing • Thermal Transfer Printer

The EasyPrint MLP Apex is designed for versatility. The EasyPrint MLP is the ideal machine for in-line printing of batch codes, graphics, logos, sell-by dates, bar codes and other variable information. The thermal transfer technology prints directly onto packaging substrates such as poly films, foil, Tyvek®, medical paper, cartons and labels. The EasyPrint MLP Apex provides solutions for multiple package coding and printing on Multivac, GEM, RapidPak, Repak, Ulma, Fargo Automation and all horizontal form, fill, seal, packaging machines.

Multiple Lane Thermal Transfer Printing for All Flexible Packaging Applications



LOT 23456890808
 2019-06-01 **3**
 (01) 10884521012884 (17) 060119 (10) 23456890808

Since 1931
JERKY Co.
CLASSIC HICKORY
 KIPPERED STYLE BEEF JERKY
 the Official Jerky of the National Cherry Festival
NET WT 7 OZ.
BEST BY: 25 JUN. 2008
MADE ON: 8087 05

Ingredients: Pork, Salt, Pepper
Nutrition Facts
 Serving Size 2slices (28g/1 oz)
 Servings Per Container 3
Amount Per Serving
 Calories 60 Calories from Fat 30
% Daily Value*
Total Fat 3g 5%
 Saturated Fat 1g 5%
Cholesterol 15mg 5%
Sodium 700mg 29%
Total Carbohydrate 1g 0%
Protein 8g
 Iron 2%
 Not a significant source of dietary fiber, sugars, vitamin A, vitamin C, and calcium.
 *Percent Daily Values are based on a 2,000 calorie diet.
 Gluten free PRODS-SL-3
 Sell by: JUL 17 2020
 Lot: 851 EST 9992

Nutrition Facts
 Serving Size 85g
Amount Per Serving
 Calories 182 Calories from Fat 85
% Daily Value*
Total Fat 9g 15%
 Saturated Fat 4g 10%
 Trans Fat 1g
Cholesterol 73mg
Total Carbohydrate 0g
 Dietary Fiber 0g
 Sugars 0g
Protein 23g
 Vitamin A 0% Vitamin C 0%
 Calcium 1% Iron 14%

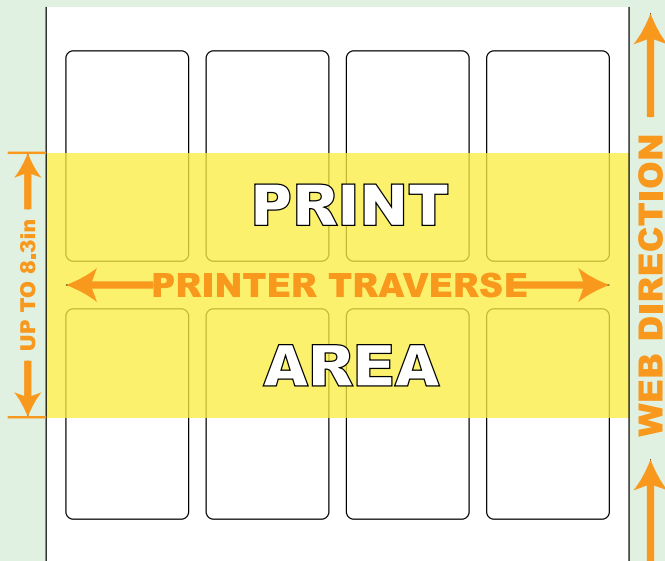
SAFE HANDLING INSTRUCTIONS
 THIS PRODUCT WAS PREPARED FROM INSPECTED AND PASSED MEAT AND/OR POULTRY. SOME FOOD PRODUCTS MAY CONTAIN BACTERIA THAT COULD CAUSE ILLNESS IF THE PRODUCT IS MISHANDLED. PLEASE HANDLE CAREFULLY FOR YOUR PROTECTION.



EasyPrint MLP Apex Video

EasyPrint MLP ApeX

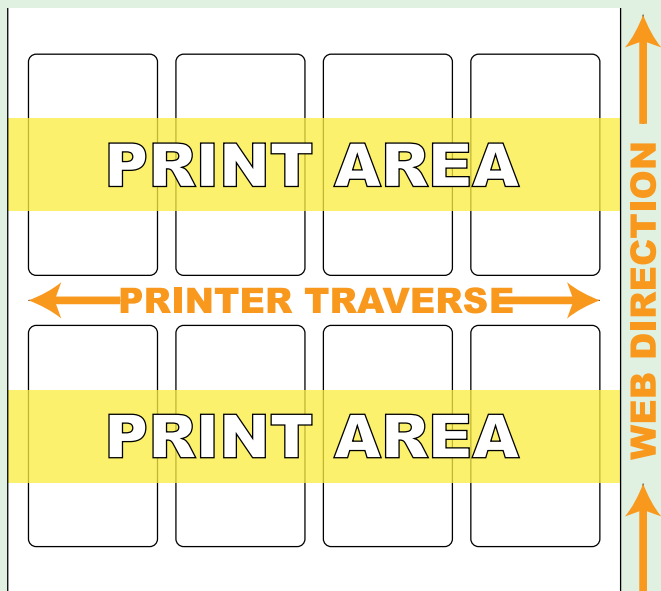
Multi Lane - Traversing Printer



EasyPrint MLP ApeX

split platen

Multi Lane - Multi Row - Traversing Printer



Print Multiple Lanes and Rows with a single sweep of the print head.

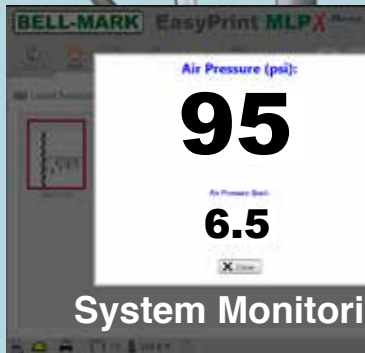
Features

- Ribbon Saving feature reduces ribbon waste up to 50%
- Low air pressure detection maximizes print quality for critical applications
- Carriage home position is located at operator side for easy ribbon changes
- Floating print head provides perfect alignment to substrate for high quality printing
- Available with 2", 5" and now 8.3" print heads
- Modular circuit board makes service and maintenance a breeze
- Advanced IP67 rated design includes sealed electrical bay and watertight connectors
- Category 3 safety standards with fail safe circuitry

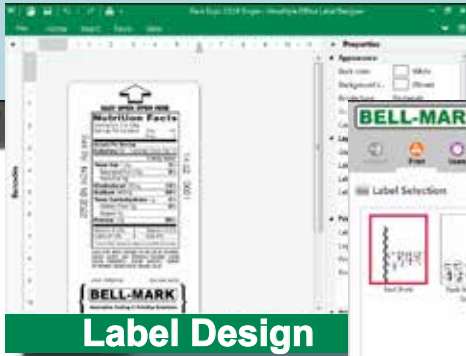
Harsh Environment HMI / Control Box



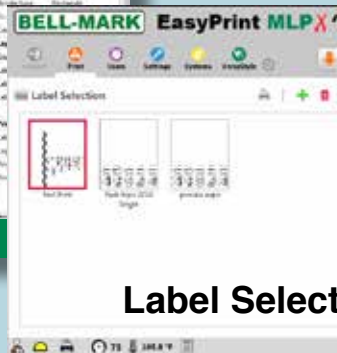
- 10.4" IP67 rated touch screen with built-in label creation software and updated user interface
- PC control system with solid state drive
- Ethernet, RS232, or discrete I/O to connect to packaging line
- Save optional traversing settings with label
- Full (VDP) Variable Data Printing Capable
- Remote support, training, and software updates are a standard feature, requiring only an Internet connection
- Multiple customized password levels
- Full Data logging support tied to individual users
- Interactive help system and how to videos
- Mil-spec water-tight connectors
- Hygienic design
- C.E. Marked



System Monitoring



Label Design

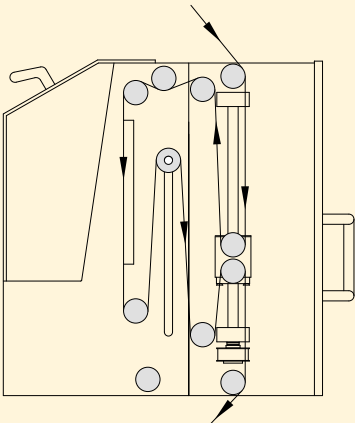


Label Selection

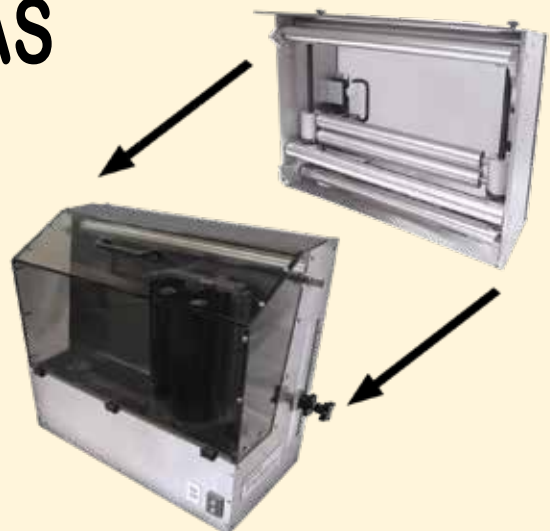


How To Videos

EasyPrint MLP WAS Web Advance System



Attaches directly to an EasyPrint mlp, and allows for multiple rows of printing on Horizontal Form/Fill/Seal machines, without the need for additional print stations.



EasyPrint MLP Apex Applications



Mounted on a HFFS medical device packaging line



Mounted on a Vertical Bagger



Apex printing on bottom web



Mounted on a HFFS food packaging line

Benefits of EasyPrint Thermal Transfer Printing

Saves Time and Money

Thermal transfer eliminates costly setup and downtime of changing metal or rubber type on hot stamp and competitive coders. No messy ink jet cleanup or downtime. The EasyPrint MLP Apex is an easy alternative to labels and pre-printed films.

More Prints Per Ribbon

Over 51,181 3/4 inch (19.05mm) prints per ribbon. The EasyPrint MLP Apex has an automatic, highly accurate ribbon advance system that minimizes ribbon usage and delivers more prints per ribbon.

High Speed

Unique electronic design enables printing at speeds up to 600mm/sec. across a web.



Specifications

Technology	Direct Thermal Transfer	Time/Date	Yes
Print Area	Up to 8.3 x 23.62in (213 x 630mm)	Memory Storage	On Board USBx2 or PC
Print Speed	From 25mm/sec up to 600mm/sec	Ribbon Length	3198 ft. (975m)
Print Density	300 DPI (12 dots/mm)	Communication	Serial RS 232, USB, Ethernet
# of lanes to print	Up to 99	Display	Color Touch Screen
Graphic Logos	BMP, DXF, PCX, TIF, WMF, GIF	Temperature	41°F-104°F (5°C-40°C)
Bar Codes	EAN 13, EAN 8, Code 39, 2/5 interleave, UPC A, UPC E, Code 128, EAN 128, HIBC LIC 128, PZN, EAN add-on, Date Code, Data Matrix	Humidity	10-80% without condensation
		Electrical	115/230 VAC, 50/60Hz, 400VA
		Compressed Air	.353 CFM@ 95 PSI, Max (10LT/min @ 6 Bar)

Rev: 3.01