

EasyPrint C

Continuous Motion Thermal Transfer Printer



The New **EasyPrint C** is the fastest, (up to 1200mm per second!), high quality thermal transfer printer available for continuous motion flow wrappers, baggers, labelers, cartoners and all continuous moving webs.

The **EasyPrint C** delivers high-quality, variable coding and printing, company logos, real time and bar codes on all flexible films, Tyvek, labels, cartons and foils.

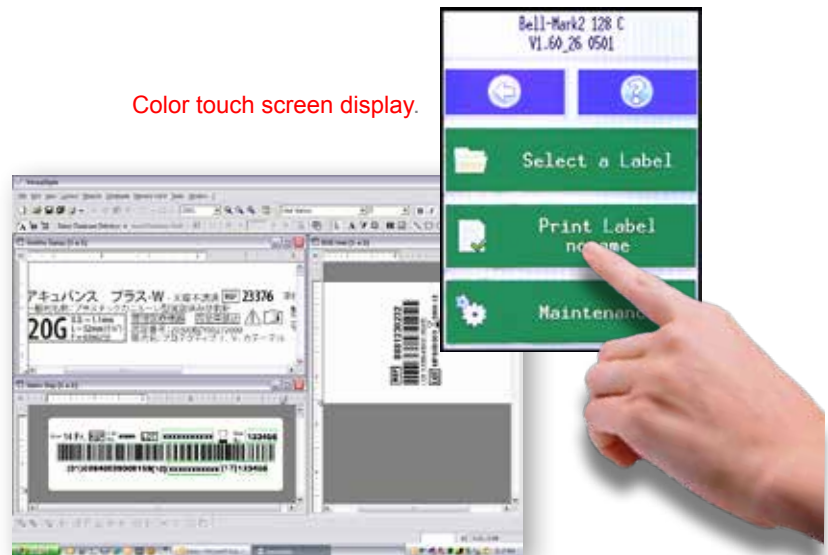
The **EasyPrint C 5"** offers the largest print area available (5" x 39.37")* with programmable flexibility. All EasyPrint Thermal Printers utilize our unique ribbon saving feature resulting in the lowest cost per print.

*depending on label content.

FEATURES:

- **Color Touch Screen Controls.**
- The largest print area available.
- Brackets available for all packaging machinery.
- Our VersaStyle software makes it easy to create labels.
- Compact size and cassette design make for easy installation and service
- Unique ribbon saving feature is software controlled resulting in the lowest ribbon cost per print.
- 800 meter ribbon length.

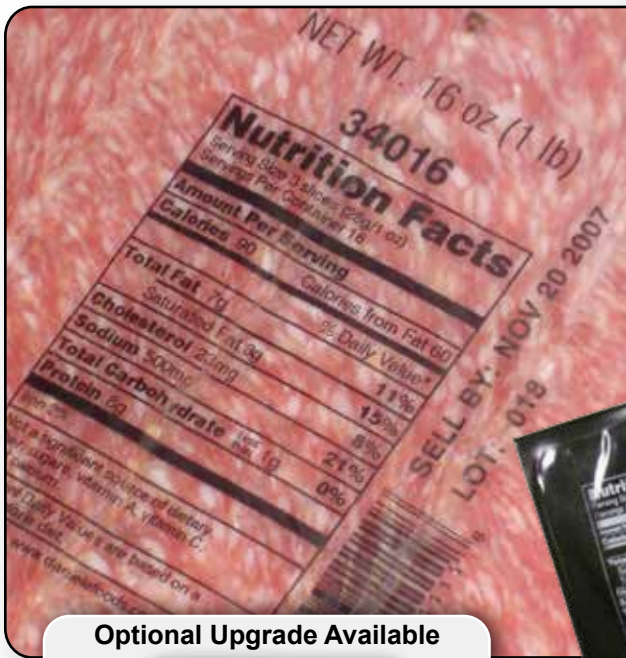
Color touch screen display.



Simple to use GUI for label design.

BELL-MARK

- ✓ SELL BY DATES
- ✓ LOT NUMBERS
- ✓ BAR CODES
- ✓ NUTRITIONAL FACTS



**BEST TO USE OR
FREEZE BY
JUL 16
\$4.90**
2012 NOV 11 1036 \$2.97/LB



**PRINT INLINE,
DIRECTLY ONTO
PACKAGING MATERIAL**

Optional Upgrade Available



Advanced, IP-67 rated,
10.4" touch-screen HMI

EasyPrint C Applications



▲ On a Vertical Bagger



▲ On an Offline Feeder



▲ On a Continuous Flow Wrapper

EASYPRINT C - Technical Specifications

	2" Model	5" Model
Print Area:	2" x 30" (51mm x 1m)	5" x 30" (127mm x 1m)
Print Technology:	Thermal Transfer, high speed corner-edge	
Print Speed:	Up to 3.94 ft./second (1200mm/sec)	
Print Density:	300 dpi, 12 pixels/mm	
Graphic Logos:	BMP, DXF, PCX, TIF, WMF, GIF	
Bar Code:	HIB2LIC, EAN 13, EAN 8, EAN 128, CODE 39, 2/5 INTERLEAVE, UPC A, UPC E, ESN, EAN ADD ON, DATE CODE	
Time/Date:	Yes	
Memory Storage:	Compact Flash Card, USB, or PC	
Alarm:	Ribbon Reserve, Ribbon End, General Faults	
Communication:	Serial RS 232, USB, Ethernet	
Display:	5.7" Color Touch Screen. 3.3" x 4.5"	
Electrical:	100/240 VAC, 50/60HZ, 400 VA	

Rev: 2.0

331 Changebridge Road, Pine Brook NJ 07058
PO BOX 2007 p:973-882-0202 f:973-808-4616 www.bell-mark.com