

# BELL-MARK



# EasyPrint mlpX

Multi-Lane Traversing Thermal Transfer Printer  
**Harsh Environment**

For multiple package coding, label printing, bar coding, real time, and graphics.

Ideally suited for Processed Meat and Cheese products



Machine Widths from 240mm - 630mm across web

## 6 Features allow for Harsh Environment printing

- 1) A Stainless steel cover which offers more protection than the standard lexan cover
- 2) A Top cover extension to prevent dripping water from entering the printer
- 3) Roller extensions on the infeed to direct the web around the extended cover
- 4) Conformally coated circuit boards to prevent damage from moisture
- 5) Sealed push buttons to prevent damage from moisture
- 6) Sealing grease in umbilical cable connector to prevent damage from moisture

## Standard Features

- ✓ Ribbon Saving feature reduces ribbon waste up 80%
- ✓ Low air pressure detection maximizes print quality for critical applications
- ✓ Carriage home position is located at operator side for easy ribbon changes
- ✓ Floating printhead provides perfect alignment to substrate for high quality printing
- ✓ Available from 240mm up to 630mm width capabilities

The EasyPrint MLPX was designed to provide a versatile Thermal Transfer solution for direct package coding in Harsh Environments. The EasyPrint MLPX is the ideal machine for in-line printing of all the variable information required for Meat & Dairy packaging, specifically those that utilize multiple rows or columns across each package.

The EasyPrint MLPX can be easily installed on Multivac, RapidPak, Tiromat, Dixie, Hooper, Mahaffy & Harder and all horizontal form/fill/seal packaging machines.



# EasyPrint mlp X

IP-65 Wash Tolerant



## FEATURES / BENEFITS

- Full Touch Screen Control.
- Full USB Support.
  - USB Memory Stick.
  - USB Keyboard.
  - USB Scanner.
- Built in Web Server.
- Faster label processing – at least 4X.
- Fast real-time variable calculation/update times.

### More fault-tolerant...

- Protected against miswiring to packaging machine.
- Protected against wrong line voltage - universal input.
- Air pressure detection protects print head.

### More application features...

- Multi-Pack printing.
- Die-Counting feature with synchronization.
- Electronic registration.
- Hand Scanner input
- Built-in Bar Codes.

### Environmental...

- IP-65 Wash Tolerant version available.

### Less complex to operate...

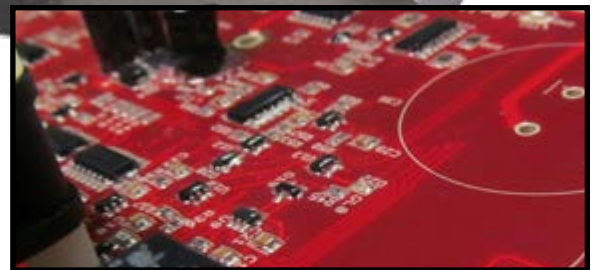
- Easier to learn, less to remember.
- More intuitive menus, simpler menu structure.
- Fewer user-settable operating parameters.
- One-Touch built-in test print.

### Smarter...

- Automatic real-time parameter compensation tracks packaging machine.

### Fewer electronics...

- Printed circuits having reliable surface-mount technology and fewer interconnections.
- Only 1 cable between control & printer.



Conformal coating material is applied to act as protection against moisture, dust, chemicals, and temperature extremes.

## Technical Specifications

<b>Technology</b>	Direct Thermal Transfer
<b>Print Area</b>	Up to 8.3 x 23.62in (213 x 630mm)
<b>Print Speed</b>	Up to 500mm/sec
<b>Print Density</b>	300 DPI (12 dots/mm)
<b>Graphic Logos</b>	BMP, DXF, PCX, TIF, WMF, GIF
<b>Bar Codes</b>	EAN 13, EAN 8, Code 39, 2/5 interleave, UPC A, UPC E, Code 128, EAN 128, HIBC LIC 128, PZN, EAN add-on, Date code
<b>Time/Date</b>	Yes
<b>Memory Storage</b>	USB
<b>Ribbon Length</b>	2,625 ft. (800m)
<b>Communication</b>	Serial RS 232, Parallel DB25, USB, Ethernet
<b>Temperature</b>	41°F-104°F (5°C-40°C)
<b>Electrical</b>	115/230 VAC, 50/60Hz, 400VA
<b>Compressed Air</b>	.353 CFM@ 88 PSI, Max (10LT/min @ 6 Bar)



Scan the code for a video of the EasyPrint MLP

331 Changebridge Road, Pine Brook NJ 07058  
 PO BOX 2007 p:973-882-0202 f:973-808-4616 [www.bell-mark.com](http://www.bell-mark.com)