

# IntelIJet TS UNO PLUS 3.0

All-In-One, 4 Head, Print Solution

## High Resolution Printing

Proven And Dependable Performance

The IntelIJet TS UNO PLUS 3.0™ all-in-one Print Head and Touch Screen User Interface give you a simple, yet incredibly powerful way to print using up to 4, 1/2" printheads with the minimum of effort. The system allows you to be up and running within minutes.

Using BELL-MARK's proven and highly reliable print solutions based on HP technology, the IntelIJet TS UNO PLUS 3.0™ is the ideal product for serialization, barcodes and human readable printing.

- No mess, no maintenance HP and Bell-Mark technology
- Rugged industrial design for the most demanding installations
- Variable and fixed data capability
- SQL Database connectivity
- Onboard job creation
- Networkable - can be connected to company network



## All NEW User Interface

- 10.4" Touch Screen with built in label creation software and updated user interface.
- Controls 4 or more print heads.
- Multiple customized password levels.
- Individual pen ink level monitoring and diagnostics.
- Internet enabled network support and software update.
- Full (VDP) Variable Data Printing Capable.
- Windows control system with solid state drive.
- Ethernet, RS232, or discrete I/O to connect to packaging line.
- Full data logging support.



# BELL-MARK

# All Inclusive Solutions

For Your Peace Of Mind

The IntelliJet TS uno+ heads are manufactured from an aluminum casing with an all metal design for maximum durability. With an industrial touch screen for its User Interface, it will stand up well in any environment.



The IntelliJet TS UNO PLUS 2.0™ has connections for encoders and sensor as well as an Ethernet port for connecting to external data sources and networks.

Additional equipment that connects directly to the TS UNO systems includes:

- Sensor
- Encoder
- Fixed pen mounting Kit
- Hand Held Barcode Scanner for message selection
- Bulk Ink Regulator and Ink Holder with Empty Detect

External Connectivity includes:

- External I/O
- Serial Port (RS 232)
- USB
- Ethernet
- Signal Light Output

## Print Samples on Black



## Print Samples on White



# Sophisticated Control

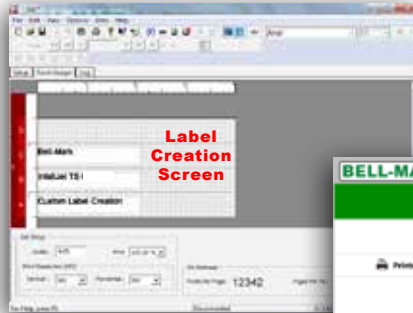
Advanced Design And Management Software

The Touch Screen Interface allows the user to monitor a wide variety of operating conditions, including job types and counts and even ink usage, all in real-time.



Built in label creation software permits the creation and preview of print templates including:

- All twenty-four Windows Unicode languages
- Dynamic and fixed text
- Dynamic and fixed bitmaps
- Time/Date Stamp - fixed or real-time
- Barcodes including 2D GS1 Data Matrix
- Barcode Width Reduction feature for printing high quality barcodes on porous substrates.



## Inks

Options To Suit Every Need

Whether printing on matte stocks or glossy finishes, Bell-Mark provides inks that dry quickly, are water resistant, and adhere to the most difficult substances.

From papers to plastics, **BELL-MARK** has the ink solution for you.

Doc V:1.0