

InteliJet TS

& InteliJet TS X₂

Small Character Thermal Inkjet Printers for Marking and Coding Applications

Easy installation, ZERO Maintenance and Extreme Versatility make the BELL-MARK InteliJet TS line of printers the ideal solution to deliver high-quality; Variable Data, Logos, Graphics, Lot Numbers, Date Codes and Bar Codes on virtually any surface.



BELL-MARK

Print Head Options

InteliJet TS standard

The **InteliJet TS** printhead is an ideal solution to deliver high-quality, Variable Data, Logos, Graphics, Lot Numbers and Date Codes on medical paper, Tyvek, and most poly and foil webs.



InteliJet TS X₂ NEW Harsh Environment Print Head

The **InteliJet TSX** IP66 Rated printhead is the ideal machine for in-line printing of all the variable information required for Meat & Dairy packaging industry.

- All NEW, All METAL Design
- One Cable Connection
- IP65 Rated in Run Mode
- IP66 Rated During Washdown



AVAILABLE BULK INK SYSTEM

- Reduces the cost per print and change over time
- 475mL or 800mL bulk ink supply depending on the ink
- Can be used with a stationary or traverse print head

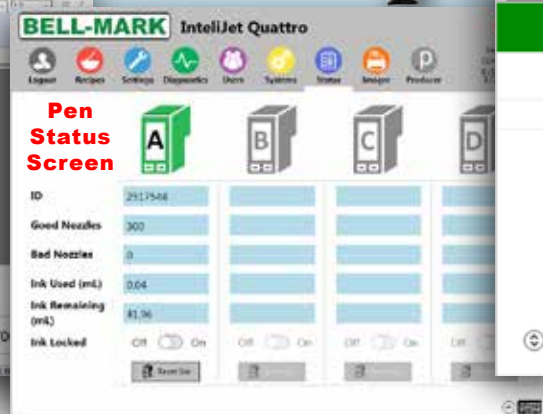
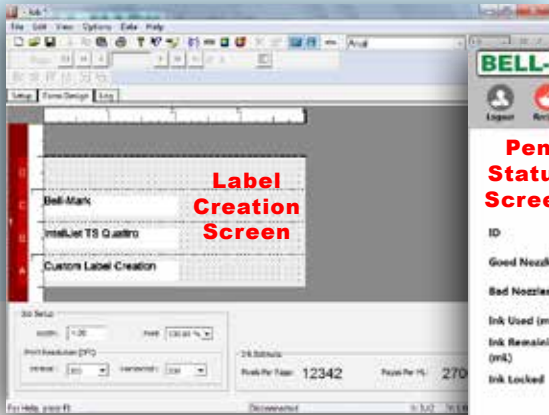


User Interface Options

InteliJet **TS** Quattro **NEW**

Harsh Environment HMI / Control Box

- 10.4" **IP66** Rated Touch Screen with built in label creation software and updated user interface.
- Controls 4 or more print heads.
- Built in multi axis traversing system controller.
- Saves optional traversing settings with label.
- Multiple customized password levels.
- Individual pen ink level monitoring and diagnostics.
- Internet enabled network support and software update.
- Full (VDP) Variable Data Printing Capable.
- Windows 7 PC control system with solid state drive.
- Ethernet, RS232, or discrete I/O to connect to packaging line.
- Full data logging support.
- Hygienic design.



InteliJet **HMI** standard

The Standard User Interface (HMI), available 6" or 15", is a touch screen computer which provides print job design, printer configuration, control and monitoring for up to 64 individual printheads or four lines. Operationally, a wide variety of operating conditions can be monitored in real-time, including job types, counts and even ink consumption. A USB port allows for connection to hand held barcode scanners or for thumb drives to upload print jobs. The 6" User Interface is a Windows CE industrial and has IPS Director pre-installed. The 15" User Interface is Windows XP Embedded and has IPS Director and IPS Producer pre-installed. The 15" User Interface is supplied with a keyboard and mouse and a keyboard mounting bracket.



SOFTWARE

InteliJet TS Producer/Director

The IntelliJet TS Producer separates template creation and control from day to day printing processes. Operating on any computer running Windows, it permits the creation of print templates that can be exported into the User Interface via an Ethernet connection or by using a USB thumb drive.

Windows Print Driver

The Windows Print Driver allows the user to use third party software such as EASYLABEL® and BarTender® to create print-jobs and then print them using the IPS hardware. Printing becomes as simple as using a desktop printer.



SPECIFICATIONS

Orientation of Print

- Rotate (any direction in 1° increments)

Print Resolutions and Speeds

- 600x600 dpi at 25 IPS, 125 FPM, 0.635 M/S
- 600x300 dpi at 50 IPS, 250 FPM, 1.27 M/S
- 600x150 dpi at 100 IPS, 500 FPM, 2.54 M/S

Printable Items

- All twenty-four Windows Unicode languages
- Dynamic and fixed text
- Dynamic and fixed bitmaps
- Time/Date Stamp - fixed or real-time
- Barcodes including 2D GS1 Data Matrix
- Barcode Width Reduction feature for printing high quality barcodes on porous substrates

Printing Capability

- Length: • 600 dpi = 27" (685.8mm)
 • 300 dpi = 54" (1371.6mm)
 Height: • 0.5" per printhead

Controllers/Drivers


- GUI interface software is included

Communication Interfaces

- 10/100-Base T Ethernet, RS-232

Get the most out of your IntelliJet TS with innovative Bell-Mark inks

- Resin inks for non-porous surfaces including poly & foil.
- Water based inks for porous surfaces, including medical grade paper and Tyvek®.
- Unique formulas for optimum color, contrast or minimum bleed.
- Black ink is the default color, 14 spot color variations available to meet your specific requirements.
- PMS color matching available upon special request.
- UV and IR components for security and the ultimate in personalization.

Font size	Example	Print Resolution
9 pt	JAN 07 2017 08:15	300 x 300
10 pt	LOT 66G7 EXP 07 JAN 2017	300 x 300
12 pt	USE BY 07 JAN 2017 7D 5766	300 x 300
18 pt	JAN 07 17 H7788857	300 x 300
32 pt	01/07/17 08:15 A	300 x 300
N/A	 (01) 012345678901231 (10) HJS649 (17) 28 02 2015 (21) 923Z845Y716W	300 x 300

PrimeX INK was designed to take the next stage in printing on non-porous substrates. It is ideal for use with a wide variety of plastics, metals and even glass. The solvent based formula dries rapidly on many difficult substrates and has an excellent decap time. The following gives estimations on Print Costs and how many prints (images) you can get from a single cartridge.

