

**BELL-MARK**  
PRINTING SOLUTIONS

# Intelijet LP & Intelijet LPc

Thermal Inkjet 4.0 Technology



High-Definition  
Printing & Coding

Serialization  
Ready

Labels printed  
directly on product

# Intelijet LP PRO

Wide-Format Thermal Inkjet 4.0 Printer



# The Next Generation of Printing Technology

## Thermal Inkjet 4.0



The IntelliJet LP Series harnesses the power of TIJ 4.0 thermal inkjet technology to bridge the gap between high-resolution print quality and industrial-scale speed. This advanced platform is engineered for reliability, capable of maintaining crisp **600 x 1200 DPI** output at production speeds up to **182 m/min (600 ft/min)**.

### Future-Proofed Compliance & Digital Agility

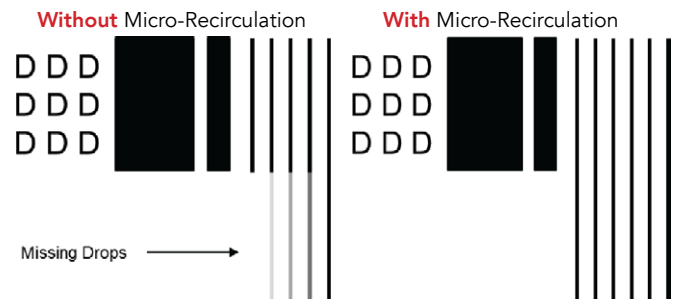
From pharmaceutical UDI compliance and GS1 Sunrise 2027 readiness to plate-free digital converting applications, TIJ 4.0 eliminates the limitations of traditional printing. This platform leverages its incredible print resolution to ensure complex 2D barcodes meet the most stringent standards of today and tomorrow.

By pairing this precision with ultra-fast print speeds, the series allows users to meet their most ambitious goals, such as high-speed converting lines, rapid-cycle packaging, or high-volume labeling. This digital agility ensures that even the most throughput-intensive environments maintain peak efficiency without sacrificing print integrity.



### Advanced Micro-Recirculation

To ensure consistent performance, all TIJ 4.0 print heads utilize a sophisticated micro-recirculation system. This technology keeps the ink in constant motion, preventing it from drying out during brief pauses or extended periods of inactivity. By effectively eliminating "decap" issues, the system significantly reduces the need for manual maintenance and ensures the first print is just as sharp as the last.



### Economical Ink Solutions

The IntelliJet LP series is engineered to deliver significant cost savings by moving away from expensive, small-scale cartridges. Instead, the series utilizes high-capacity 775ml ink tanks to provide a substantially lower cost-per-print.

### Reduced Downtime

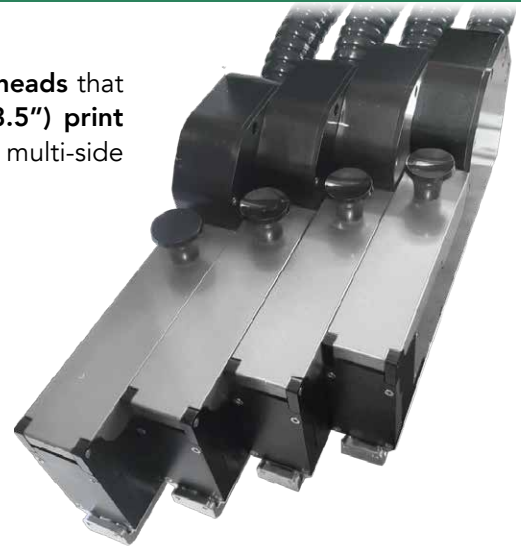
It also drastically reduces downtime by minimizing operator intervention. By maximizing the volume of available ink, the LP series allows for extended run times, providing a reliable solution that keeps pace with the most demanding high-volume labeling and case coding schedules.

# InteliJet LPc

Printing precision & versatility redefined



The InteliJet LPc features **22mm (7/8")** print heads that can be stitched together for **up to 88mm (3.5")** print width or kept separated for simultaneous multi-side printing, controlled by a single HMI.



## Patented Pen Stall Design

Opening the cover retracts the pogo pin contact board. This powers down the cartridge and shields the electronics and print cartridge from being damaged during insertion and removal.

**TIJ 2.5**  
Print Head  
12.5mm width



**InteliJet LP**  
TIJ 4.0  
Print Head  
22mm width

## Compact Design

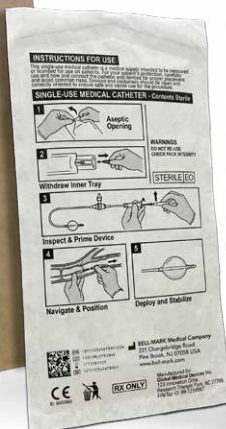
The slim design of the print head makes it easy to fit into almost any existing packaging line. For even greater flexibility, the optional bench stand lets you set up the printer without needing any additional mounting space adjacent to your line.

**Low profile print capability** at 16mm (0.65") from the conveyor.

# InteliJet LP PRO

The new standard in wide-format coding

Designed for wide-format applications, the InteliJet LP Pro leverages **108mm (4.25")** print heads for expanded print coverage that can also be stitched together for **up to 216mm (8.5")** print width or kept separated for simultaneous multi-side printing, controlled by a single HMI. It retains the same TIJ 4.0 advantages at a larger scale, providing a versatile solution for complex branding and high-resolution imaging across wider substrates.



# InteliJet LPc

Both Sides 2 x 44mm

## 22mm Print Head

Print Heads can be stitched together for seamless tall images up to 88mm, or individually placed for coding on two sides of a box.

## 775ml Ink Supply

A large capacity ensures minimal operational costs with little operator intervention. Changeover of the cartridge takes only seconds.

## LPc Enclosure

Print controller with ink reservoir, and built-in color touchscreen HMI.

## Enclosure Dimensions

13" x 11" x 9.5"  
(330mm x 279 mm x 241 mm)

**0.7 or 3 Meter Umbilical**  
Carries ink and electrical signals.

## 11.6" (295mm) Color Touchscreen HMI

HMI integrated with the print controller for space-saving convenience. Create and manage print templates, and monitor production in real time.

Four LPc Print Heads installed on a Case Taper

## Connectivity Panel

- Encoder
- Sensor
- Daisy Chain
- Ethernet
- Stack Light
- I/O



## Print Head Configurations

Both Sides 2 x 22mm

Single Side 22mm

Single Side 88mm



Scan for more info  
& videos of the  
InteliJet LPc

## Optional HMI Upgrade

# InteliJet **LPC** PLUS

The LPC PLUS HMI is designed for users who require enhanced connectivity, automated workflows, and strict regulatory compliance.

- **Enhanced Support & Training** featuring integrated TeamViewer Access enables the BELL-MARK Training Team to provide instant remote troubleshooting and support, minimizing potential downtime.
- **Built-in Help System** with "How To" videos that guide the user through maintenance tasks, step-by-step.
- **Windows Hot Folder:** Automate your workflow by dropping files into a designated server folder for immediate and automatic processing.
- **Regulatory Compliance:** Built for the medical and pharmaceutical industries, the LPC Plus is 21 CFR Part 11 Compliant. It features a FULL Audit Trail, maintaining a complete unalterable record of all user actions and system events to ensure total accountability and data integrity.



## InteliJet **LPC** Applications



**LPC** - Spiral Tube Winding



**LPC** - Multi-Side Printing



**LPC** - Box Taping Machine

# InteliJet **LP**

## Alternative Print Controller & HMI

Built for 24/7 uptime, the InteliJet LP features **dual 775ml "hot-swappable" ink tanks** that allow for replacements without stopping the line. The print controller is separate from the HMI and can also be controlled with an external PC, making it the top choice for mailing systems or lines with a centralized data server.



# InteliJet LP PRO

## 108mm Print Head

Print Heads can be stitched together for up to 216mm (8.5") print width, or individually placed for coding on two sides of a box simultaneously.

## Dual Ink Tanks

Two reservoirs ensure that ink will never run out. When one has emptied, it will switch to the other automatically, allowing for non-stop operation.

## 0.7 or 3 Meter Umbilical

Carries ink and electrical signals.

## 11.6" (295mm) Color Touchscreen HMI

HMI integrated with the print controller for space-saving convenience. Create and manage print templates, and monitor production in real time.

## LP Pro Enclosure

Small footprint industrial housing with dual ink tanks, color touchscreen, power and monitoring LEDs.

## Enclosure Dimensions

13" x 11" x 9.5"  
(330mm x 279 mm x 241 mm)



## Direct-to-Case Efficiency

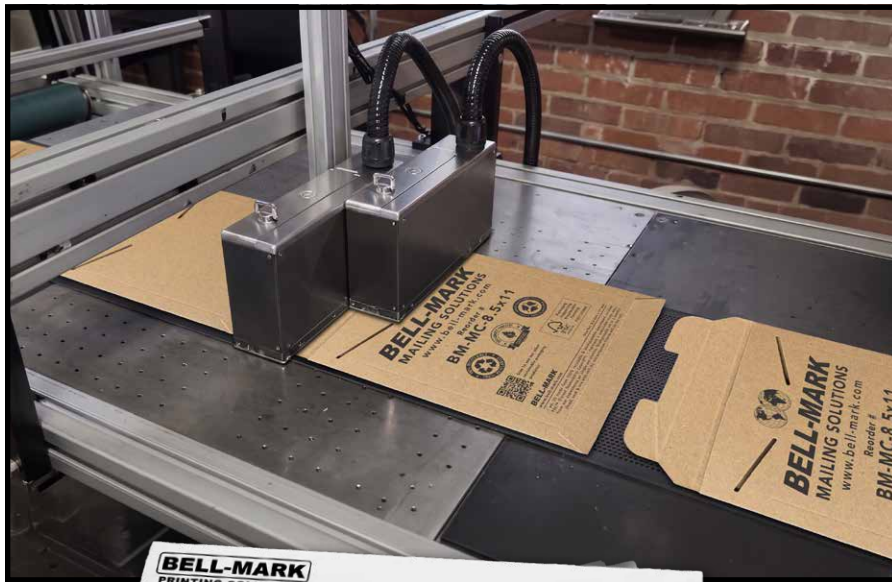
Transform your packaging process with the ability to print tall seamless graphics, directly onto corrugated materials. This provides a superior alternative to traditional adhesive-backed labels by eliminating the cost of label stock and the maintenance of applicator hardware.

For specialized applications requiring even greater coverage, two heads can be seamlessly stitched together to reach a massive 216mm print height. Whether you are looking for the simplicity of a single-head solution or the expansive reach of a dual-head configuration, the Intelijet LP provides the flexibility to meet your specific production demands.



## Digital Converting Without the Wait

The IntelliJet LP Pro transforms the converting market by replacing traditional, rigid workflows with high-speed digital efficiency. By transitioning to this digital solution, you can finally ditch expensive print plates and eliminate the long lead times. The built-in label creation software allows you to move from design to production in minutes, facilitating instant job changeovers and high-resolution output that keeps pace with the most demanding industrial lines.



## High-Volume Mailing & Label-Free Shipping

Streamline your logistics by printing shipping information and variable data directly onto envelopes and boxes, eliminating the need for physical labels and applicator maintenance. The 108mm print head provides ample width for standard labels, while the option to stitch two heads together offers an expansive 216mm canvas for larger packages. The system can connect directly to a database hub to populate unique addresses and 2D barcodes in real-time, maintaining blistering speeds that keep up with the highest-volume mail lines for a truly intuitive and integrated shipping process.



# Unmatched Capability

Horizontal Resolution	Max Speed	
	ft/min	m/min
1200	300	91
600	600	183

Spec	LP / LPc	LP Pro
Print Width	22mm - 88mm (7/8" - 3.5")	108mm - 216mm (4.25" - 8.5")
Maximum Resolution	600 x 1200 DPI	
Drop Size	6 pl	
Jetting Frequency	72 kHz	
Throw Distance	Up to 7mm (1/4") *	

\* Print Speed Dependent

Printable Items	Lot Codes, Date codes, Alphanumerical, Barcodes, Bitmaps, PDF
Barcode Printing	EAN-13/EAN 8, UPC-A, Code128, ITF-14, ITF-2of5, Code39, Cryptocode, GS1 Data-matrix, QR (114 barcode support included)
Print Density	User Configurable (12.5% - 100%)
Umbilical Length	0.7m (3.2 ft) and 3m (9.8 ft)
Ink Types	Aqueous (Black and Spot Colors)
Ink Solution	775mL Ink Supply
Electrical Interface	Ethernet, I/O, Sensor, Encoder, Stack Light
Voltage	115V to 240V
Software Included	Vega from BELL-MARK
Connectivity	SQL, Remote Host, ERP
Languages	English, Spanish, German, French, Korean, Chinese, Portuguese
Data File Support	CSV, TXT, MDB, XLS, XLSX, ACCDB

## Ink Usage Estimates

The following examples give an estimate of the number of prints you can expect before replacement of the Ink Supply. For more information, contact your **BELL-MARK** sales representative.

**22mm tall** - 165,500 Prints

**44mm tall** - 77,900 Prints

**88mm tall** - 42,800 Prints



## Sunrise 2027 Compliance

**Future-Proof your Packaging Line Today:** Prepare for the global transition to data-rich 2D barcodes with **BELL-MARK Digital Printing**. The IntelJet LP series is fully compliant with GS1 Sunrise 2027 standards, enabling high-resolution printing of 2D barcodes. Future-proof your operation today to ensure seamless traceability, FSMA 204 readiness, and enhanced consumer engagement ahead of the 2027 deadline.

Scan the QR code to learn more about Sunrise 2027

SUNRISE 2027 COMPLIANT



v:1.0