

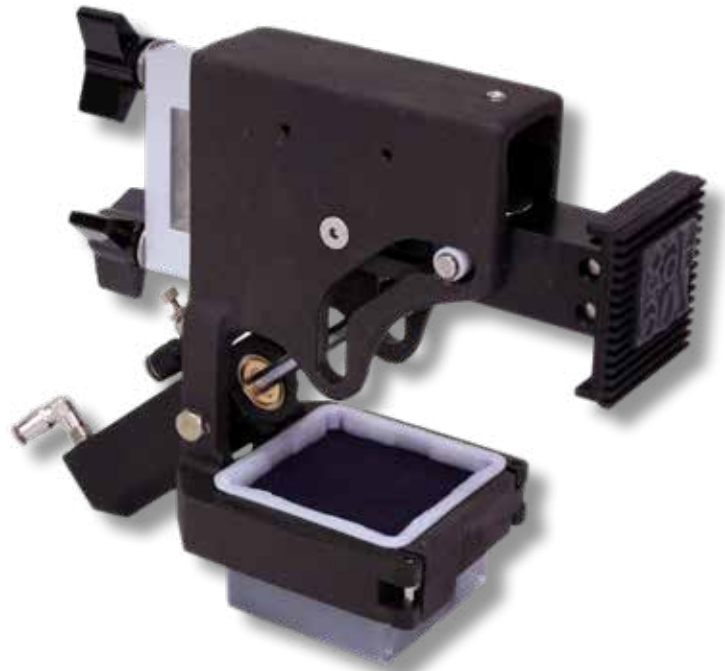
BELL-MARK

MEMBER
PMMA
USA

Reciprocal Ink Coders

The Simple and Economical choice for Coding, Printing and Labeling on all flexible packaging films, labels and cartons. The US-4300 and US-4500 easily install on horizontal and vertical form/fill/seal, cartoners, labelers and all intermittent motion packaging machines.

- New one piece design means no parts replacement.
- Reversible printhead offers flexibility in code location.



US-4300

Cast Aluminum

Patented and improved disposable ink cartridges use fast dry water-base and specialty formulas.



US-4500

Stainless Steel



Features

- New and improved ink cartridges
- Fast dry formulations provide excellent adhesion on poly, metalized foil and all substrates
- Patented foam / membrane composition insures metered ink distribution for high quality impressions at the lowest operating cost
- Available colors include violet, blue, red, green, black, white and yellow

Specifications

- Construction: One piece cast. (Stainless Steel or Aluminum)
- Operating Speed: 125 prints per minute
- Size: 2" x 2" / 50mm x 50mm
- Print Medium: Ink Cartridges
- Print Element: Rubber or photopolymer print plates
- Weight: 2 lbs. / 0.907 Kg
- Signal: Dry Contact, relay, photo eye
- Air: 12 psi

Applications

- Code Dates
- Pricing
- Lot & Exp. Codes
- Establishment Numbers
- Labeling
- Production Codes
- Product ID