

BELL-MARK

InteliJet **HD**TM

**Flexible, Reliable, High Speed, High Definition,
Full Color CMYK Piezo Inkjet Printing System**



Utilizing the world's fastest and highest resolution inkjet print head technology, the InteliJet HDTM meets increasingly rigorous demands for printing dates, times, bar codes, serial numbers and text in Monochrome, 2 Color and Full CMYK color on coated and un-coated packaging web materials.

IntelliJet HD™

- The **IntelliJet HD™** is a Piezo Drop on Demand digital printer that will print all artwork including variable information on demand directly onto the top web material.
- Available **Single Color, Two Color, & Full CMYK Color** configurations allow the customer to have almost limitless print capabilities for existing and future business.
- UDI compliant print solution that can be retrofitted to existing packaging machines.
- LED Curable or Water Based Inks for printing on most substrates.
- 600 x 600 DPI Print Head, Each Monochrome Print Head is 108 mm wide 105 mm when stitched.
Each CMYK Print Head is 112 mm wide, 108 mm when stitched.
- Lowest Cost of Ownership Compared to Other Printing Systems
- Connect to Customer ERP system and through a hot folder can utilize existing label software like Prisym, Labelview, Bartender, and more.

IntelliJet HD™ Stationary Head Printer for Roll Stock Machines



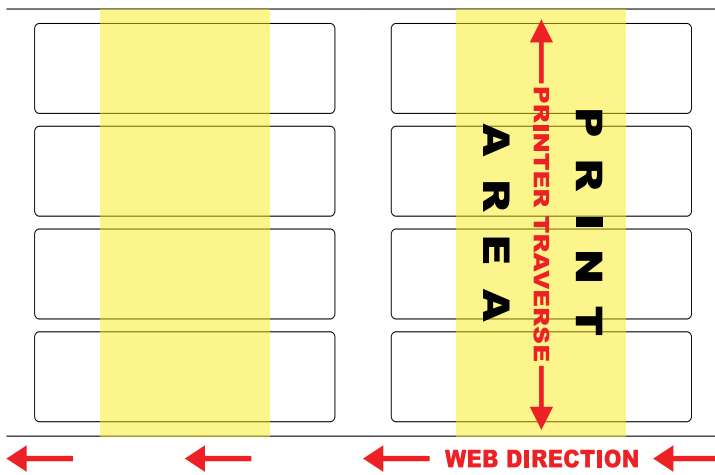
InteliJet HD TRAVERSE™

Traversing Piezo Inkjet Printer

A perfect fit for applications with short indexes combined with a wide web or applications with pre-printed web with the need to print UDI & other variable data.



HD Traverse Video



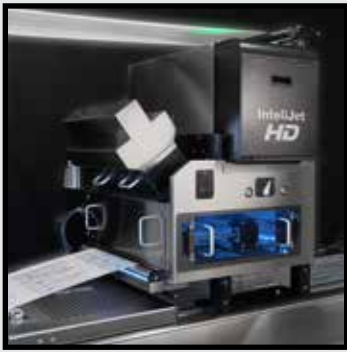
InteliJet HD OFF-LINE™

Off-Line Feeder Printing System

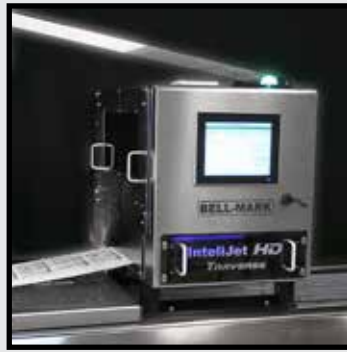
Feed and print empty packages and packaging components



HD Off-Line Video



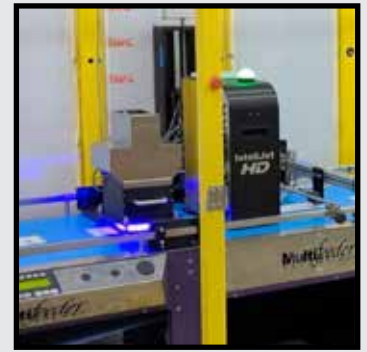
HD ServoWAS on a HFFS



HD Traverse on a HFFS



HD ServoWAS on a Pharma Blister Pack Machine



HD Continuous on a Multifeeder

Benefits:

Efficient Workflow: As a fully integrated multi-color VDP (Variable Data Printing) ink jet system, the IntelliJet HD™ works seamlessly with its PC based print design software and touch screen controls to achieve an easy to use VDP workflow.

IntelliJet HD™ offers a simple and flexible workflow with both on-line and off-line modes. Users can print VDP jobs directly from the client PC. The IntelliJet HD™ software also enables users to design and modify the print output templates using its extensive array of editing tools.

The IntelliJet HD™ touch screen software installed on the PC system is specifically designed for Variable Data Printing. It offers the user a friendly interface to interactively control the IntelliJet system, monitor its status, and set its many powerful print options. The touch screen software also allows users to prepare or add additional data while at the same time actively printing high productivity jobs.

- **Lowers TCO over other printing systems.**
- **Little to ZERO maintenance costs.**

Features

Print Head Module

- Up to 12 - Print Heads
- Up to 630 mm of effective print width
- 600 DPI Printhead
- UV Ink Compatible.
- 4-Drop Sizes (6,7,11,14 pL)
- Full Color CMYK Printing

Integrated Ink System

- Unique BELL-MARK Design.

Web Advance Module

- Web Shuffle Mechanism Facilitates Instant Curing Even When Mounted on an Intermittent Motion Host Machine.
- Intelligent Servo Motor Provides Precise Closed Loop Positioning for Accurate Print Registration.

Print System Controller

- Advanced Control of Every Aspect of the Print and Print Head.
- Multi-Head Support.
- Multi-Resolution Support.
- High Speed Print Driver.
- Full Feature Render Engine.
- High Speed Variable Data Rip Engine.
- Full Control of Print Head Heater Temperature.
- Full Control of Print Head Grey Levels.

UV Curing System

- Allows for printing on almost all surfaces.
- LED Technology for Long Life and Reduced Power Consumption.
- Ozone Free Operation (No External Venting Required).
- Air-Cooled, Requiring no External Compressed Air or Water for Operation.

Print Control and Layout Software

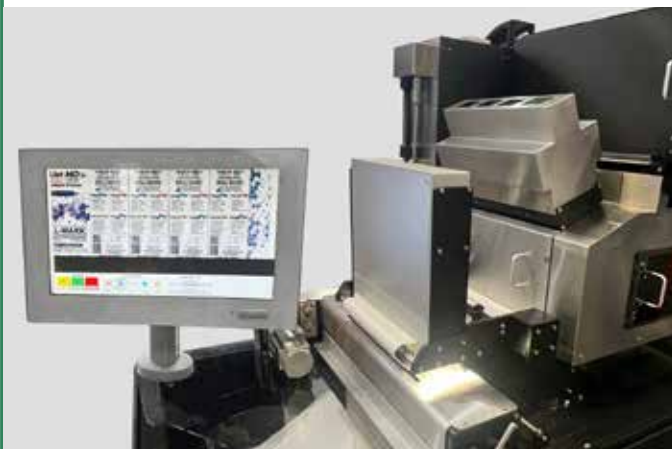
- BELL-MARK Layout / Label Creation Tool Featuring the Following Specifications:
 - Multi-Image Importation, Resizing, and Rotation.
 - Step and Repeat Function.
 - Supports all the Most Common File types (BMP, TIFF, JPG, PNG, GIF, PDF).
 - Supports all types of Variable Information (Text, Barcodes, Date Codes, Serialization).
- Supports, Text File and User Entry Data Sources.
- Supports Over 80 Types of Barcodes Including:
 - GS1-128, GS1-DataMatrix (2D)
 - EAN 13, EAN8, EAN14
 - Code 39, Code 128
 - UPC A
 - SSCC18
 - PZN
 - QR-Code

Networking

- Ethernet, TCP/IP, OPC UA (Can be client or server), Serial (RS232), Hot Folder and more.

Optional Vision Inspection Solution

100% in-line inspection and barcode grading solution that can be integrated with the customer ERP or labeling solution.



Specifications:

- Print widths from 108 mm up to 630 mm wide.
- Print speeds up to 150 M/min.
- UV cured ink, water-based dye and pigmented inks, or MICR ink.
- Instant Start Up & Instant Shut Down.
- UV Curable Inks for superb print quality on any substrate including poly, foil, medical paper, Tyvek, etc. Can even print on the seals with no adverse effects to the print or the seal gasket.
- LED Lights for ink curing reduce energy consumption, have extremely small footprint, and has NO hazardous by-products.
- 600 DPI print heads print completely legible fonts at 3-point font size including Asian characters.
- Network Capable
- Completely programmable with auto date calculations, barcodes (GS1 data matrix, linear barcodes, etc.).
- Built in Barcode Width Reduction feature for high quality barcodes on porous substrates.
- 208V 3-Phase 30A.
- Remote Service Capable.