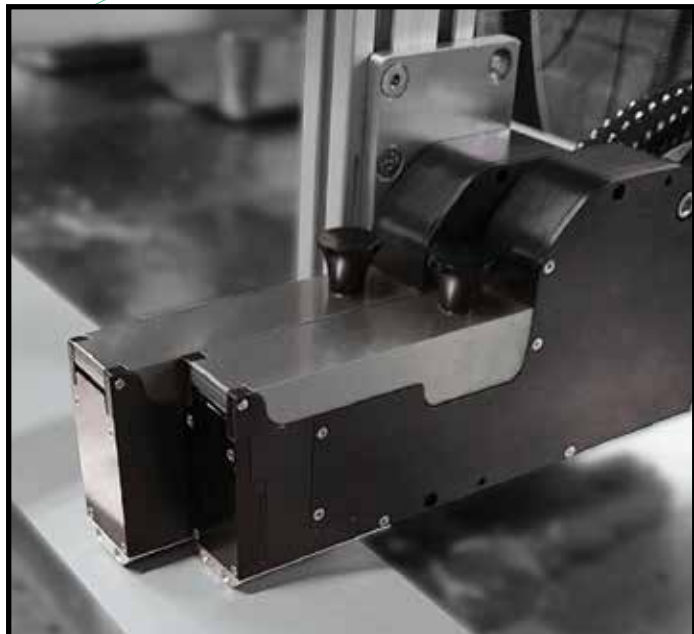


BELL-MARK

InteliJet LP

**High Speed, High Resolution
Thermal Inkjet 4.0 Print Solution**

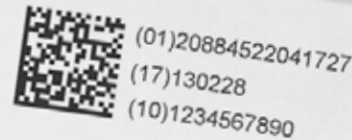


**7" (178mm) ▶
touch-screen**



◀ **Print controller
with integrated
ink system**

- Print speeds up to 732 m/min
- 1,200 DPI resolution
- 22mm print head width
- Up to 7mm throw distance
- Stitch up to 4 print heads,
controlled by a single user interface
- Lower cost ink solution
- Higher efficiency



High Throughput Print Solution

InteliJet LP

The latest innovation from **BELL-MARK** is the **InteliJet LP**. Utilizing TIJ 4.0 technology with 22mm wide print heads, it is a high throughput variable data printing solution. With increased throw distance and a speed that is 4 times faster than TIJ 2.5 printers, it reduces operational costs while providing incredible print resolution in applications where quality is a major business driver.

TIJ 4.0 Print Technology

With a 22mm print swath, a 1.5L ink supply, greater throw distance and improved print resolution, the **InteliJet LP** is designed exclusively for high production environments.

- 22mm (7/8") print width
- Hot swappable ink
- Improved print quality and throw distance
- 4 times faster than TIJ 2.5

InteliJet LP Specifications	
Print Width	22mm / 0.875"
Resolution	1,200 DPI
Drop Size	6 pl
Frequency Jetting	72 kHz
Throw Distance	Up to 7mm / 0.25"

TIJ 2.5 Printhead
12.5mm width



vs.



InteliJet LP TIJ 4.0 Printhead
22mm width

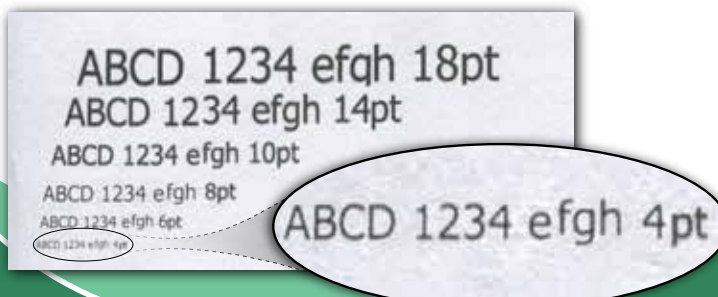
High Quality, High Speed

The **InteliJet LP** supports up to 1,200 DPI resolution, giving you maximum quality at all times.

Horizontal Resolution	Max Speed	
	ft/min	m/min
1200	300	92
600	600	183
300	1200	366
150	2400	732

For all production applications where throughput is critical, the printer is capable of ultra fast speeds to meet your productivity goals.

- 1200 DPI print resolution
- Up to 732 m/min (2400 ft/min) line speed



Ink Solution

The **InteliJet LP** utilizes two 775mL ink supplies. As one empties, ink is fed automatically from the other, allowing continuous production and uptime.



Print Controller with Integrated Ink System

Small footprint (15" x 10" x 9.5" / 381mm x 254mm x 241mm) industrial housing with dual ink docking stations, power and monitoring LEDs.

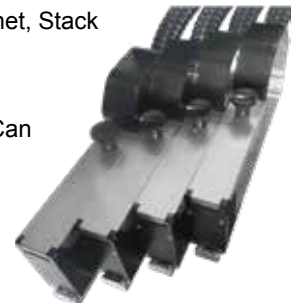


Connectivity Panel

Encoder, Sensor, Daisy Chain, I/O, Ethernet, Stack Light

22mm (7/8") Stitchable Print Head

Up to four 22mm print heads supported. Can be stitched. Low profile print capability at 16.5mm (0.65") from the conveyor.



3 Meter Umbilical

Carries ink & electrical signals

Patented Pen Stall Design

Opening the cover retracts the pogo pin contact board.

This powers down the cartridge and protects the electronics and print cartridge from being damaged during insertion and removal.



Advanced User Interface

The 178mm (7") color touch-screen HMI offers a powerful user interface which enables users to monitor a wide array of operating conditions, such as job types and counts.

The HMI also includes label creation software. Use the touch screen to easily preview and create print templates or import them via an ethernet connection or a USB thumb drive.

