

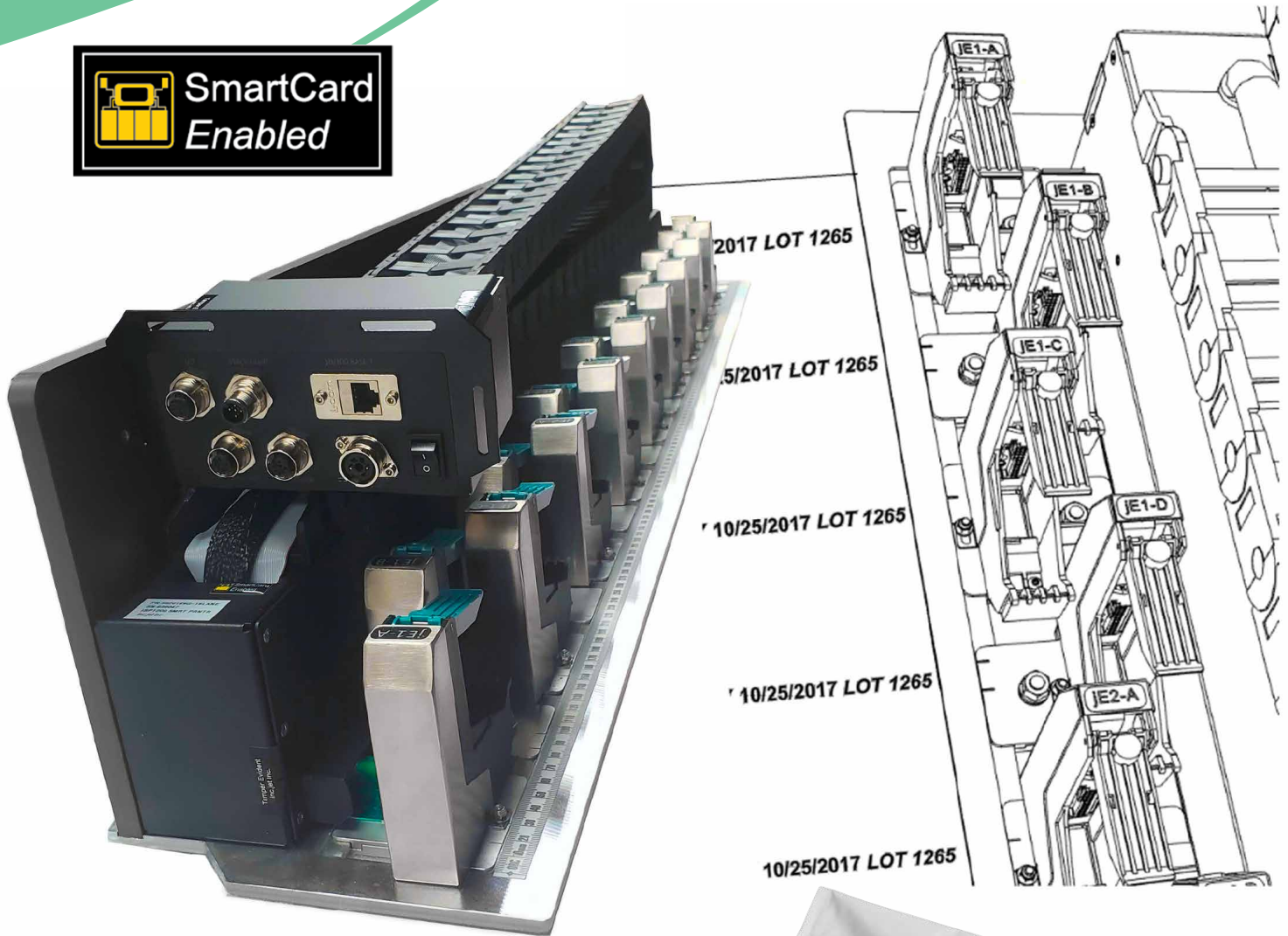
BELL-MARK

InteliJet TSP

**PRINT SOLUTIONS FOR
FORM FILL SEALERS**



**SmartCard
Enabled**



- **No traversing parts or ribbons**
- **Lowest cost solution available**
- **Millions of prints per cartridge**
- **Expandable design: 1 to 20 lanes**
- **Fits new & retrofit FFS machinery**

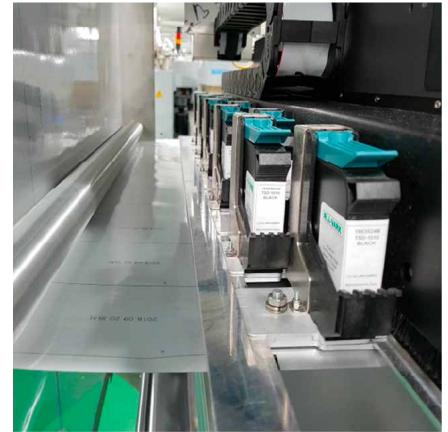


Simple and Solid Printer Integration

The high resolution **IntelJet TSP** printer from **BELL-MARK** provides a versatile and cost-effective, coding and marking solution for Vertical Form and Fill Sealers (VFFS). The units can be bolted into almost any VFFS machine with very little effort.

With no unreliable and expensive shuttling system, no complex ribbons to change and with a small footprint, a modular design with no moving parts to consider, the print solution gives maximum uptime with almost no maintenance.

Available in 4 to 20 lanes, and designed to integrate into 600mm, 800mm, 1000mm and 1200mm widths, the **IntelJet TSP** is the best and most cost effective method for coding and marking on Form Fill Sealers.



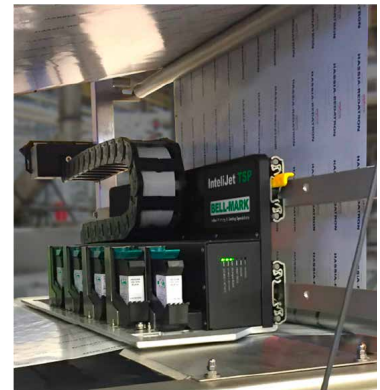
Replaces all Other Printers

If you have used other print technologies, then you know how costly it can get. Why pay more when you can get better throughput, zero maintenance, simple installation and guaranteed performance.

- **CIJ—No shuttling heads, no mess, no smell**
- **TTO—No ribbons, no replacing of print heads**
- **Laser—No high upfront hardware costs, no extraction systems**



From 4 lanes to 20 lanes



Rapid Replacement of Cartridges



Access to IntelJet TSP via slide mount

Better Throughput / Better ROI

The print system can be running in a matter of seconds with the minimum of user intervention, always ensuring maximum productivity. With TIJ based print heads from **BELL-MARK**, you see only the ink you print.

- **Maximum uptime, zero downtime**
- **No maintenance costs**
- **Reduced consumable costs**

Simple Integration

Installing an **IntelJet TSP** into a new build or retrofit is a matter of providing a mounting plate for the slides to affix. Often the existing film path can be used with no additional rollers required.

- **Upgrade simply with minimal engineering**
- **Slide mount allows for external cartridge access**
- **Ideal for New-Build or Retrofit**



Easy integration into existing equipment



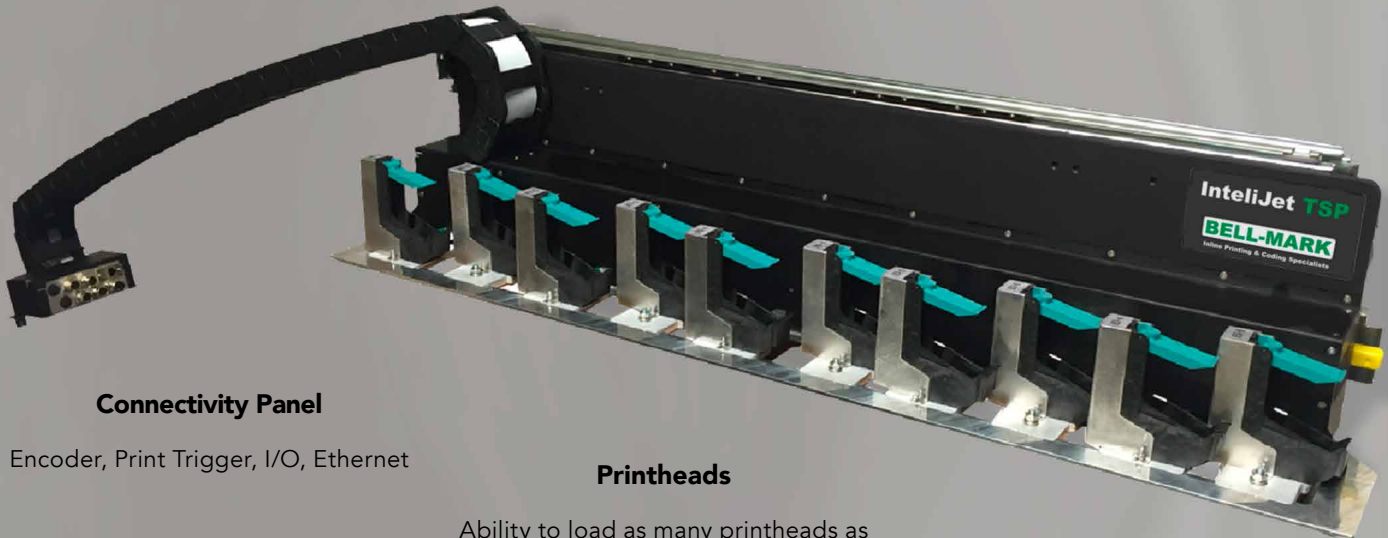
One Solution for all FFS Applications

Energy Chain

Carries power and printer signals to the printhead for a lifetime of use

Slider Mount

Enables entire print head assembly to be moved away from the print area to load cartridges



Connectivity Panel

Encoder, Print Trigger, I/O, Ethernet

Printheads

Ability to load as many printheads as required for the specific application

Ski

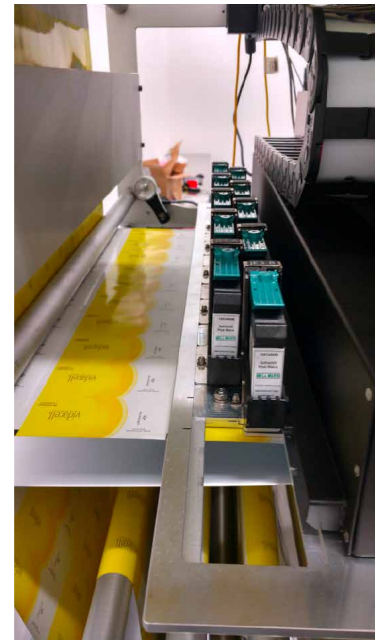
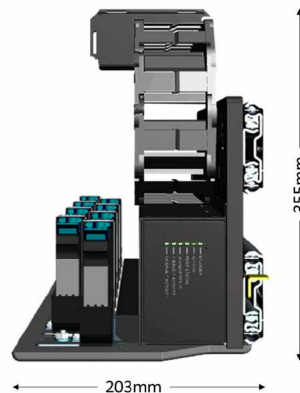
Adjust printhead placements simply and quickly to suit your specific application

Model	Max Foil Width	No of Lanes Supported	Unit Size
TSP600	600mm	4 to 10	686mm x 210mm x 191mm
TSP800	800mm	8 to 12	866mm x 210mm x 191mm
TSP1000	1000mm	9 to 14	996mm x 210mm x 191mm
TSP1200	1200mm	13 to 20	1270mm x 210mm x 191mm

Horizontal Resolution	Max Speed	
	m/min	ft/min
600 dpi	46	150
300 dpi	762	50
150 dpi	1525	00


- **Minimum Print Width** 54.0mm
- **Maximum Print Height** 12.7mm
- **Maximum No. of Lanes** 20mm

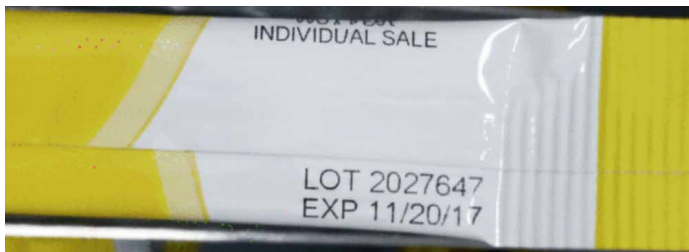
Space requirements for installation



Ink Usage Estimates

The following gives an estimate of the number of prints you can expect from a single cartridge, based on what you are printing. For more information, contact your **BELL-MARK** sales representative.

Font Size	Example	Print Resolution	Images Per Cartridge
9 pt	JAN 07 2027 08:15	300 x 300	580,00
10 pt	LOT 66G7 EXP 07 JAN 2027	300 x 300	260,000
12 pt	USE BY 07 JAN 2027 7D 5766	300 x 300	185,000
18 pt	JAN 07 27	300 x 300	104,000
32 pt	01/07/27 08:15 A	300 x 300	52,000
N/A	 (01) 012345678901231 (10) HJS649 (17) 28 02 2015 (21) 923Z845Y716W	300 x 300	73,000



Sunrise 2027 Compliant

Future-Proof your Packaging Line Today: Prepare for the global transition to data-rich 2D barcodes with **BELL-MARK Digital Printing**. The IntelliJet TSP is designed for the global transition to 2D barcodes. **Future-proof your operation today** to ensure seamless traceability, FSMA 204 readiness, and enhanced consumer engagement ahead of the 2027 deadline.

**SUNRISE 2027
COMPLIANT**



Scan to learn
more about
Sunrise 2027