

EasyPrint i

Intermittent Motion Thermal Transfer Printer



The **EasyPrint i** provides the highest quality thermal transfer printing for all intermittent motion packaging machines, baggers, and labelers.

The **EasyPrint i** delivers high-quality, variable coding and printing, company logos, real time and bar codes on all flexible films, Tyvek, labels, cartons and foils.

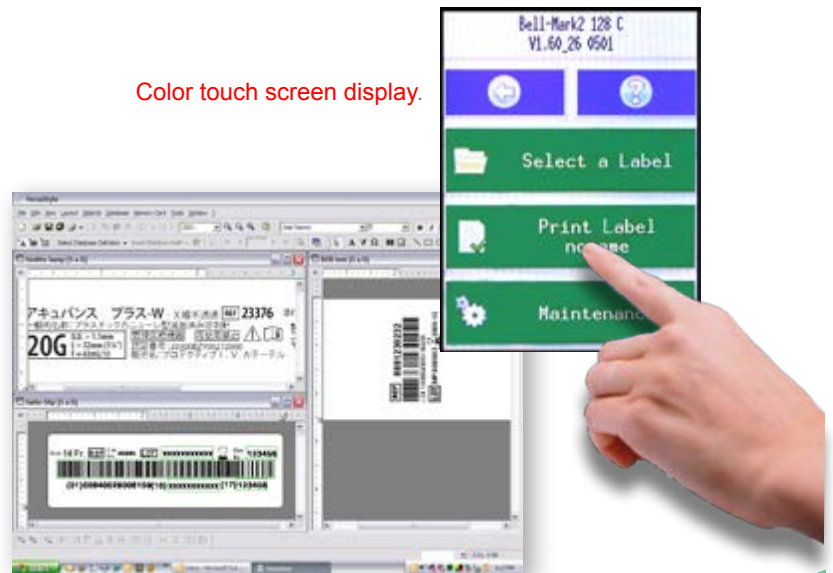
The **EasyPrint i 5"** provides the largest print area available and offers programmable flexibility to eliminate costly preprinted web and labels.

All EasyPrint Thermal Printers utilize our unique ribbon saving feature resulting in the lowest cost per print.

FEATURES:

- **Color Touch Screen Controls.**
- The largest print area available.
- Brackets available for all packaging machinery.
- Our VersaStyle software makes it easy to create labels.
- Compact size and cassette design make for easy installation and service
- Unique ribbon saving feature is software controlled resulting in the lowest ribbon cost per print.

Color touch screen display.



Simple to use GUI for label design.

BELL-MARK

- ✓ SELL BY DATES
- ✓ LOT NUMBERS
- ✓ BAR CODES
- ✓ NUTRITIONAL FACTS



**PRINT INLINE,
DIRECTLY ONTO
PACKAGING MATERIAL**

EASYPRINT i

Technical Specifications

	2" Model	5" Model
Print Technology:	Thermal Transfer, high speed corner-edge	Thermal Transfer, high speed corner-edge
Print Area:	2" x 4" (51mm x 102mm)	5" x 4" (127mm x 102mm)
Print Speed:	Up to 1.64 ft./second (500mm/sec)	Up to 1.64 ft./second (500mm/sec)
Print Density:	300 dpi, 12 pixels/mm	300 dpi, 12 pixels/mm
Graphic Logos:	BMP,DXF,PCX,TIF,WMF, & GIF	BMP,DXF,PCX,TIF,WMF, & GIF
Bar Code:	HIBC2LIC, EAN 13, EAN 8, EAN 128, HIBC2LIC, EAN 13, EAN 8, EAN 128, CODE 39, 2/5 INTERLEAVE, UPC A, UPC E, ESN, EAN ADD ON, DATE CODE	HIBC2LIC, EAN 13, EAN 8, EAN 128, HIBC2LIC, EAN 13, EAN 8, EAN 128, CODE 39, 2/5 INTERLEAVE, UPC A, UPC E, ESN, EAN ADD ON, DATE CODE
Time/Date:	Yes	Yes
Memory Storage:	USBx2, or PC	USBx2, or PC
Alarm:	Ribbon Reserve, Ribbon End, General Faults	Ribbon Reserve, Ribbon End, General Faults
Communication:	Serial RS 232, USB, DB25 Parallel, Ethernet	Serial RS 232, USB, DB25 Parallel, Ethernet
Display:	5" x 7" Color Touch Screen	5" x 7" Color Touch Screen
Electrical:	115/230 VAC, 50/60HZ, 400 VA	115/230 VAC, 50/60HZ, 400 VA

331 Changebridge Road, Pine Brook NJ 07058
PO BOX 2007 p:973-882-0202 f:973-808-4616 www.bell-mark.com