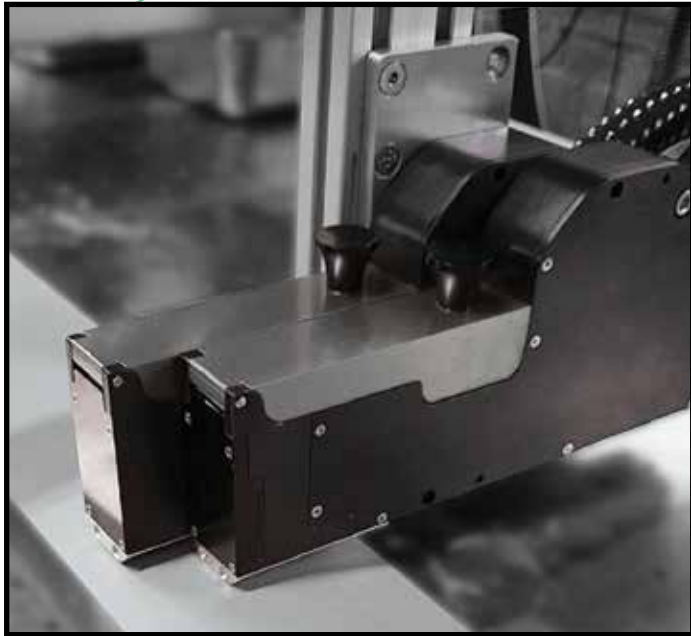


BELL-MARK

InteliJet LPc

**High Speed, High Resolution
Thermal Inkjet 4.0 Print Solution**



- Print speeds up to 2400 fpm
- 1,200 DPI resolution
- 22mm print head width
- Up to 7mm throw distance
- Stitch up to 4 print heads, controlled by a single user interface
- Lower cost bulk ink solution
- Higher efficiency

▲ **11.6" color touch-screen HMI with integrated bulk ink system**

- Printing & Coding
- Labels printed directly on product
- Serialization Ready



High Throughput Print Solution

IntelliJet LPc

The latest innovation from **BELL-MARK** is the **IntelliJet LPc**. Utilizing TIJ 4.0 technology with 22mm wide print heads, it is a high throughput variable data printing solution. With increased throw distance and a speed that is 4 times faster than TIJ 2.5 printers, it reduces operational costs while providing incredible print resolution in applications where quality is a major business driver.

TIJ 4.0 Print Technology

With a 7/8" print swath, a 775ml ink supply, greater throw distance and improved print resolution, the **IntelliJet LPc** is designed exclusively for high production environments.

- 22mm print width
- Improved print quality and throw distance
- 4 times faster than TIJ 2.5

IntelliJet LPc Specifications	
Print Width	0.875" / 22mm
Resolution	1,200 DPI
Drop Size	6 pl
Frequency Jetting	72 kHz
Throw Distance	Up to 1/4" / 7mm

**TIJ 2.5
Printhead**
12.5mm width



vs.



**IntelliJet LPc
TIJ 4.0
Printhead**
22mm width

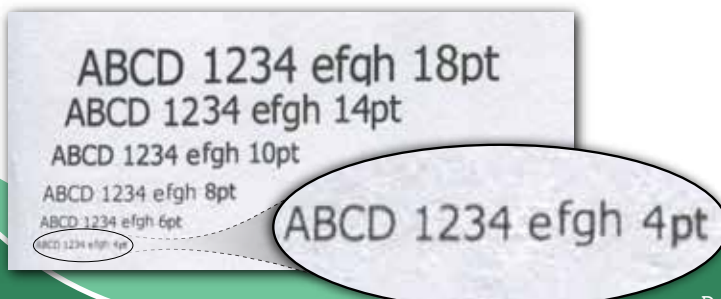
High Quality, High Speed

The **IntelliJet LPc** supports up to 1200 DPI resolution, giving you maximum quality at all times.

Horizontal Resolution	Max Speed	
	ft/min	m/min
1200	300	92
600	600	183
300	1200	366
150	2400	732

For all production applications where throughput is critical, the printer is capable of ultra fast speeds to meet your productivity goals.

- 1200 DPI print resolution
- Up to 2400 fpm line speed



Bulk Ink Solution

The **IntelliJet LPc** utilizes one 775ml bulk ink supply.



Print Controller with Integrated Bulk Ink

Small footprint (15" x 10" x 9.5") industrial housing with a bulk docking station, power and monitoring LEDs.



Connectivity Panel

Encoder, Sensor, Daisy Chain, I/O, Ethernet, Stack Light

7/8" (22mm) Stitchable Print Head

Up to four 22mm print heads supported. Can be stitched. Low profile print capability at 0.65" from the conveyor.

3 Meter Umbilical

Carries ink & electrical signals

Patented Pen Stall Design

Opening the cover retracts pogo pin contact board. This powers down the cartridge and protects the electronics and print cartridge from being damaged during insertion and removal.



Advanced User Interface

The 11.6" color touch-screen HMI offers a powerful user interface which enables users to monitor a wide array of operating conditions, such as job types and counts.



The HMI also includes label creation software. Use the touch-screen to easily preview and create print templates or import them via an ethernet connection or a USB thumb drive.



Doc V: 1.1